



Heritage Square Shopping Center

1871 E. Marlton Pike | Cherry Hill, NJ 08003

Property Description

Located along Route 70 in Cherry Hill, Heritage Square Shopping Center is a multi-tenant retail plaza with great frontage and visibility. In addition to a prime location minutes from all major regional thoroughfares, Heritage Square also features ample parking, pylon signage on Route 70, excellent demographics, and ample nearby amenities.

Tenants: Sakura Springs (Japanese/sushi), Edible Arrangements, Cho's Beauty Salon, MCA Travel, Mimi's Italian Eatery & Pizza

Lease Rate

\$15.00 PSF NNN

2ND FLOOR OFFICE also available!
Aggressively priced! Ready to occupy!
Contact us for more information!



New Penn Medicine Complex Opening Next Door!

Lots of daytime foot traffic. Camden County College is also within easy walking distance.

Traffic Count on Route 70: 81,074 vehicles per day

For more information:

Julie Kronfeld, SIOR

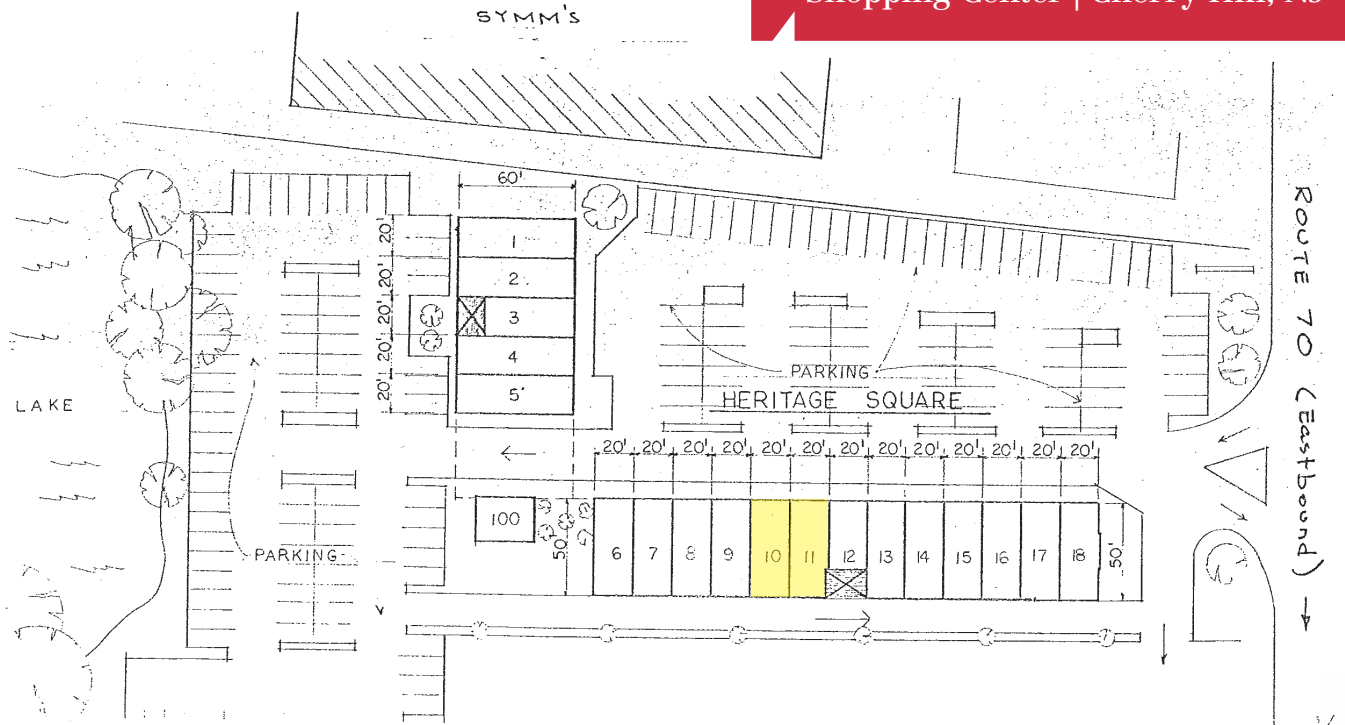
+1 856 802 6516

julie.kronfeld@naimertz.com

Rebecca Ting, SIOR

+1 856 234 9600

rebecca.ting@naimertz.com



Current Availabilities

Unit 10	1,000 SF	Vanilla Shell
Unit 11	972 SF	
2nd Floor Office		
Unit 201	2,520 SF	
Unit 203	1,645 SF	



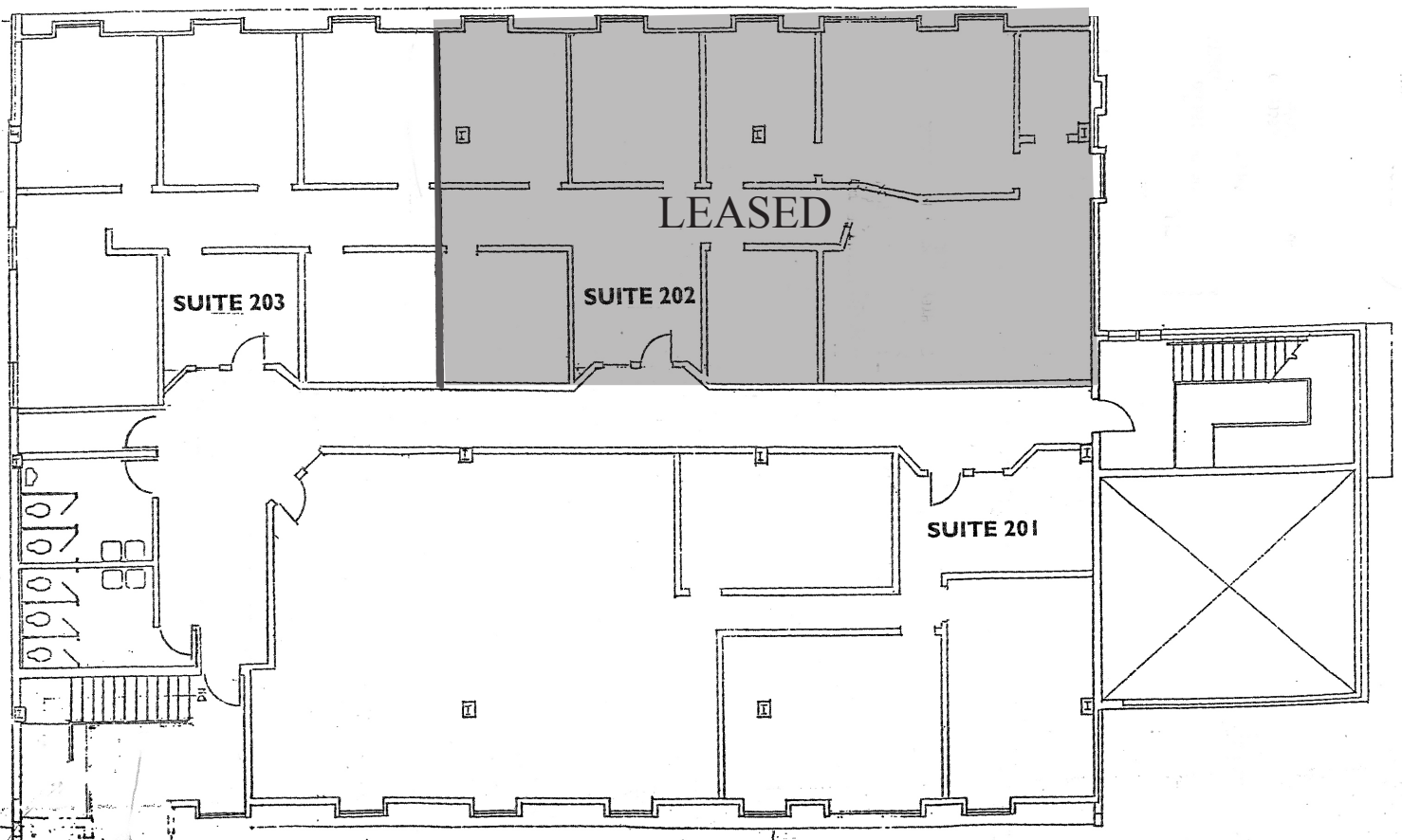
NO WARRANTY OR REPRESENTATION, EXPRESS OR IMPLIED, IS MADE AS TO THE ACCURACY OF THE INFORMATION CONTAINED HEREIN, AND THE SAME IS SUBMITTED SUBJECT TO ERRORS, OMISSIONS, CHANGE OF PRICE, RENTAL OR OTHER CONDITIONS, PRIOR SALE, LEASE OR FINANCING, OR WITHDRAWAL WITHOUT NOTICE, AND OF ANY SPECIAL LISTING CONDITIONS IMPOSED BY OUR PRINCIPALS NO WARRANTIES OR REPRESENTATIONS ARE MADE AS TO THE CONDITION OF THE PROPERTY OR ANY HAZARDS CONTAINED THEREIN ARE ANY TO BE IMPLIED.

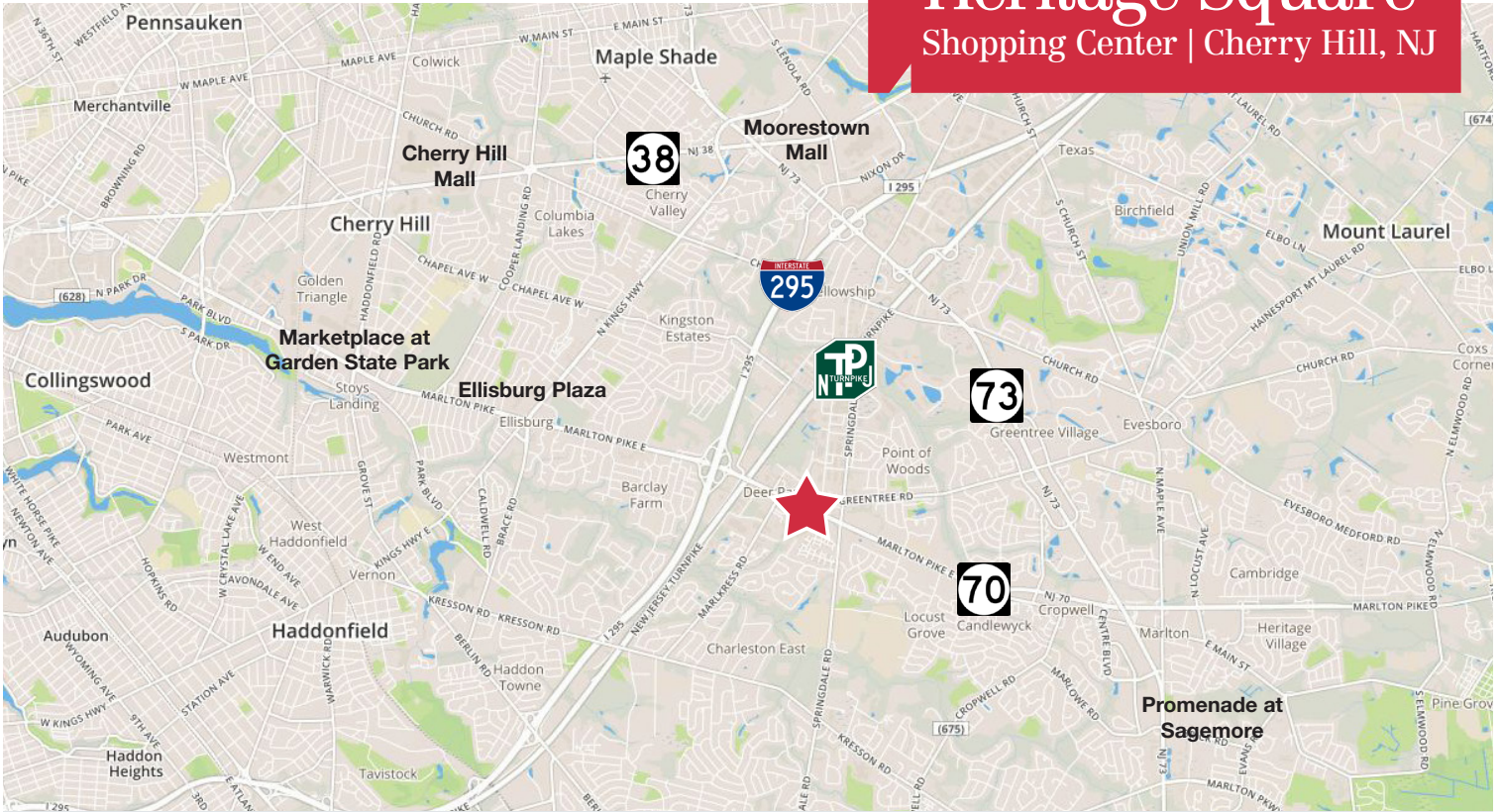
21 Roland Avenue
 Mount Laurel, NJ 08054
 +1 856 234 9600
naimertz.com

2nd Floor Office Availabilities

Suite 201 2,520 SF

Suite 203 1,645 SF





Location Information

- Immediate access to Route 70
- Less than 1/2 mile from I-295 (Exit 34)
- 1.88 miles to NJ Turnpike (Exit 4)
- 2.39 miles to Route 70/ Route 73 Interchange
- 2.71 miles to Route 38
- 9 miles from Center City Philadelphia via Ben Franklin Bridge

Nearby Amenities

- Marketplace at Garden State Park (3 miles)



- Cherry Hill Mall (4 miles)



- Hotels within 5 miles



Demographics	1 mi	3 mi	5 mi
Population	7,144	80,883	223,125
Households	2,707	31,420	88,079
Med. Household Income	\$103,555	\$87,056	\$81,117

NO WARRANTY OR REPRESENTATION, EXPRESS OR IMPLIED, IS MADE AS TO THE ACCURACY OF THE INFORMATION CONTAINED HEREIN, AND THE SAME IS SUBMITTED SUBJECT TO ERRORS, OMISSIONS, CHANGE OF PRICE, RENTAL OR OTHER CONDITIONS, PRIOR SALE, LEASE OR FINANCING, OR WITHDRAWAL WITHOUT NOTICE, AND OF ANY SPECIAL LISTING CONDITIONS IMPOSED BY OUR PRINCIPALS NO WARRANTIES OR REPRESENTATIONS ARE MADE AS TO THE CONDITION OF THE PROPERTY OR ANY HAZARDS CONTAINED THEREIN ARE ANY TO BE IMPLIED.