



OFFICE SPACE FOR LEASE

1200 QUAIL STREET
Newport Beach, California

for more information, visit www.lee-irvine.com



Exclusively listed by:

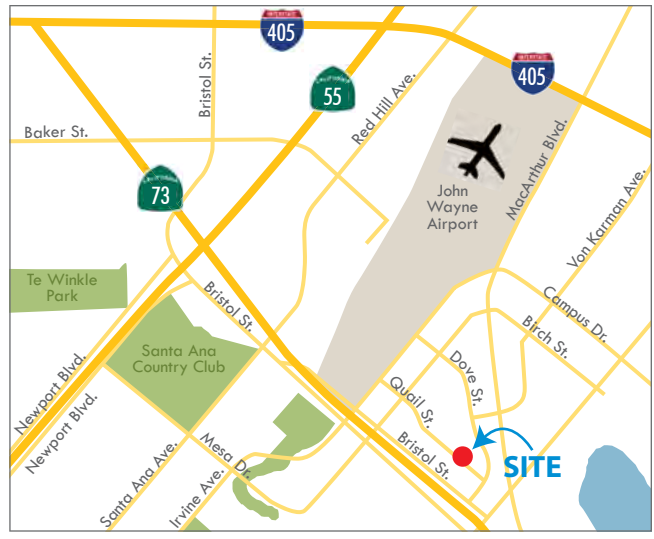
Dave Smith
Senior Vice President
CalBRE 01195186
949.790.3134
dsmith@leeirvine.com

Matt Fryer
Senior Vice President
CalBRE 01333079
949.790.3122
mfryer@leeirvine.com

Lee & Associates, Inc. - Irvine
9838 Research Drive
Irvine, California 92618

PROPERTY FEATURES

- Prime Newport Beach location
- Quality garden office building
- COMMON AREA CONFERENCE ROOM AVAILABLE BY RESERVATION AT NO CHARGE
- Extensive glass line
- Free surface parking and limited covered parking available at monthly charge
- Close to numerous retail amenities
- Minutes to John Wayne Airport
- Immediate access to the 405, 55 and 73 Freeways





OFFICE SPACE FOR LEASE

1200 QUAIL STREET Newport Beach, California



AVAILABILITY

Suite	Sq. Ft.	Lease Rate	Description
160	1,621	\$2.50 FSG	Available 6/1/19
255	1,005	\$2.35 FSG	3 offices and open area.

Exclusively listed by:

Dave Smith

Senior Vice President
CalBRE 01195186
949.790.3134
dsmith@leeirvine.com

Matt Fryer

Senior Vice President
CalBRE 01333079
949.790.3122
mfryer@leeirvine.com

Lee & Associates, Inc. - Irvine
9838 Research Drive
Irvine, California 92618



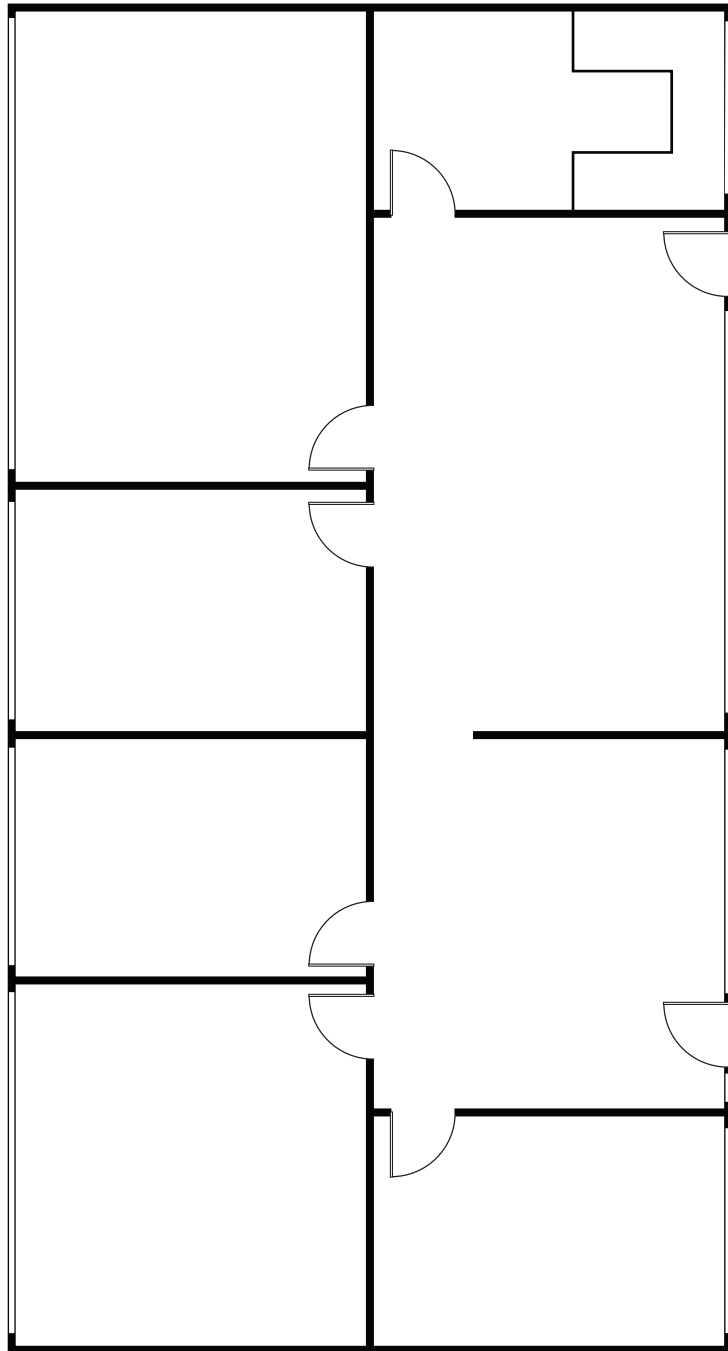


OFFICE SPACE FOR LEASE

1200 QUAIL STREET
Newport Beach, California



SUITE 160 - 1,621 SQ. FT.



Exclusively listed by:

Dave Smith

Senior Vice President
CalBRE 01195186
949.790.3134
dsmith@leeirvine.com

Matt Fryer

Senior Vice President
CalBRE 01333079
949.790.3122
mfryer@leeirvine.com

Lee & Associates, Inc. - Irvine
9838 Research Drive
Irvine, California 92618

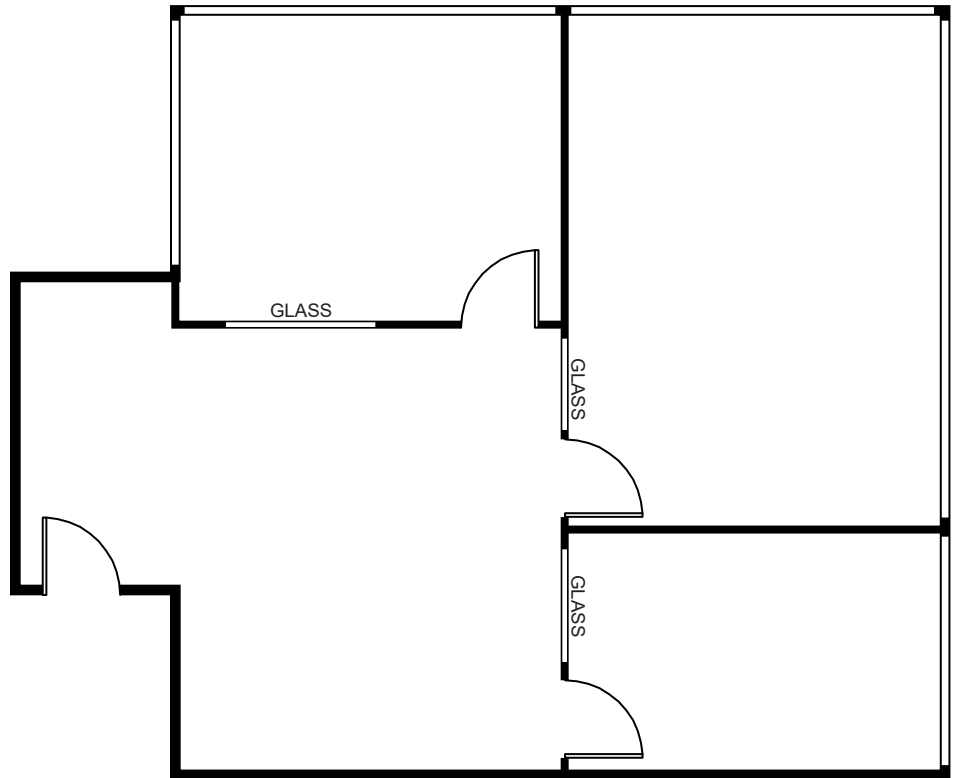


OFFICE SPACE FOR LEASE

1200 QUAIL STREET
Newport Beach, California



SUITE 255 - 1,005 SQ. FT.



Exclusively listed by:

Dave Smith

Senior Vice President
CalBRE 01195186
949.790.3134
dsmith@leeirvine.com

Matt Fryer

Senior Vice President
CalBRE 01333079
949.790.3122
mfryer@leeirvine.com

Lee & Associates, Inc. - Irvine
9838 Research Drive
Irvine, California 92618