



FOR LEASE
900-7,500 SF UNITS



IRVINE BUSINESS CENTER

15791-15801 Rockfield & 2-10 McLaren | Irvine, CA 92618

PROPERTY HIGHLIGHTS:

- High-Image Business Park near the Irvine Spectrum Entertainment Center
- Single Story Industrial and Retail Spaces with Street Frontage
- Close Proximity to 5, 405, and 133 Toll Freeways
- Ground Level Doors
- ±14 Foot Minimum Clear Height
- Expansion Capabilities
- 2/1,000 SF Parking Ratio
- Walkable Retail Amenities
- Immediate Occupancy
- 100 Amps, 120-208 Volts, 3 Phase Power (verify)
- Institutionally Owned and Professionally Managed

FOR MORE INFORMATION, PLEASE CONTACT:

KYLE MCGILLEN
+1 949 930 9229

kyle.mcgillem@cushwake.com
CA Lic. 01959388

MORGAN CHIATE
+1 949 930 9246

morgan.chiate@cushwake.com
CA Lic. 02055492

CHIATEELLISON
B R O K E R A G E T E A M

Owned by:
GLP 

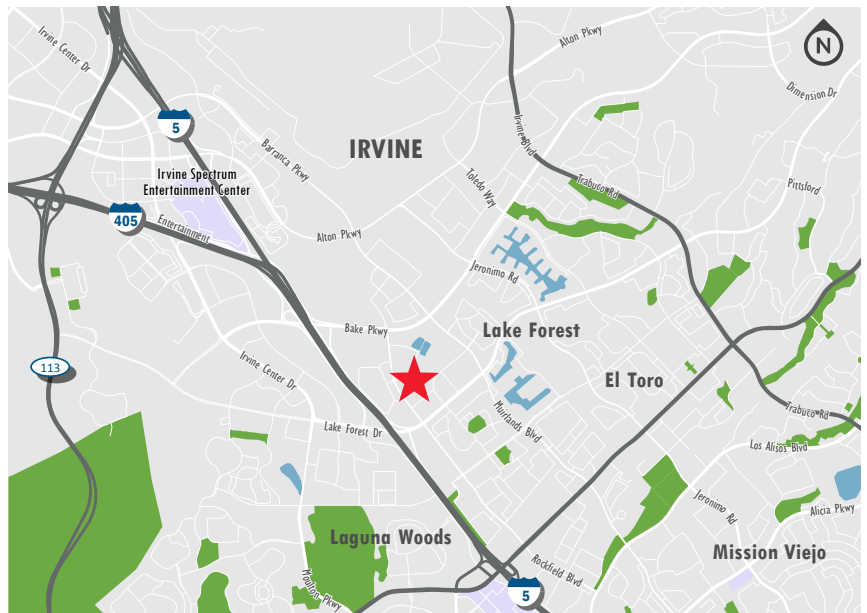
©2018 Cushman & Wakefield. All rights reserved. The information contained in this communication is confidential, may be privileged and is intended for the exclusive use of the above named addressee(s). If you are not the intended recipient(s), you are expressly prohibited from copying, distributing, disseminating, or in any other way using any information contained within this communication. This information has been obtained from sources believed to be reliable but has not been verified. No warranty or representation, express or implied, is made as to the condition of the property (or properties) referenced herein or as to the accuracy or completeness of the information contained herein, and same is submitted subject to errors, omissions, change of price, rental or other conditions, withdrawal without notice, and to any special listing conditions imposed by the property owner(s). Any projections, opinions or estimates are subject to uncertainty and do not signify current or future property performance. This e-mail may be considered advertising under federal law.

15791-15801 ROCKFIELD & 2-10 MCLAREN IRVINE, CA



AMENITIES:

- Nekter
- Panera Bread
- IHop
- Uoko Japanese Cuisine
- Inka Grill
- Buffalo Wild Wings
- Starbucks
- Waba Grill
- FedEx Office
- Chevron
- Subway
- Taco Bell



15791-15801 ROCKFIELD & 2-10 MCLAREN IRVINE, CA



15791-15801 ROCKFIELD & 2-10 MCLAREN IRVINE, CA

ADDRESS	SIZE	OFFICE %	RATE	AVAILABLE
15795 Rockfield - Suite G	5,626	25%	\$1.40 G	Now
15801 Rockfield - Suite N	1,620	20%	\$1.45 G	February
4 McLaren - Suite D	1,460	25%	\$1.45 G	Now
6 McLaren - Suite A	1,200	15%	\$1.45 G	February
10 McLaren - Suite A-1	1,054	0%	\$1.30 G	Now
8 McLaren - Suite E	972	15%	\$1.55 G	Now
8 McLaren - Suite J	972	15%	\$1.55 G	Now
8 McLaren - Suite M	972	15%	\$1.55 G	Now
8 McLaren - Suite Q	972	15%	\$1.55 G	Now



FOR MORE INFORMATION, PLEASE CONTACT:

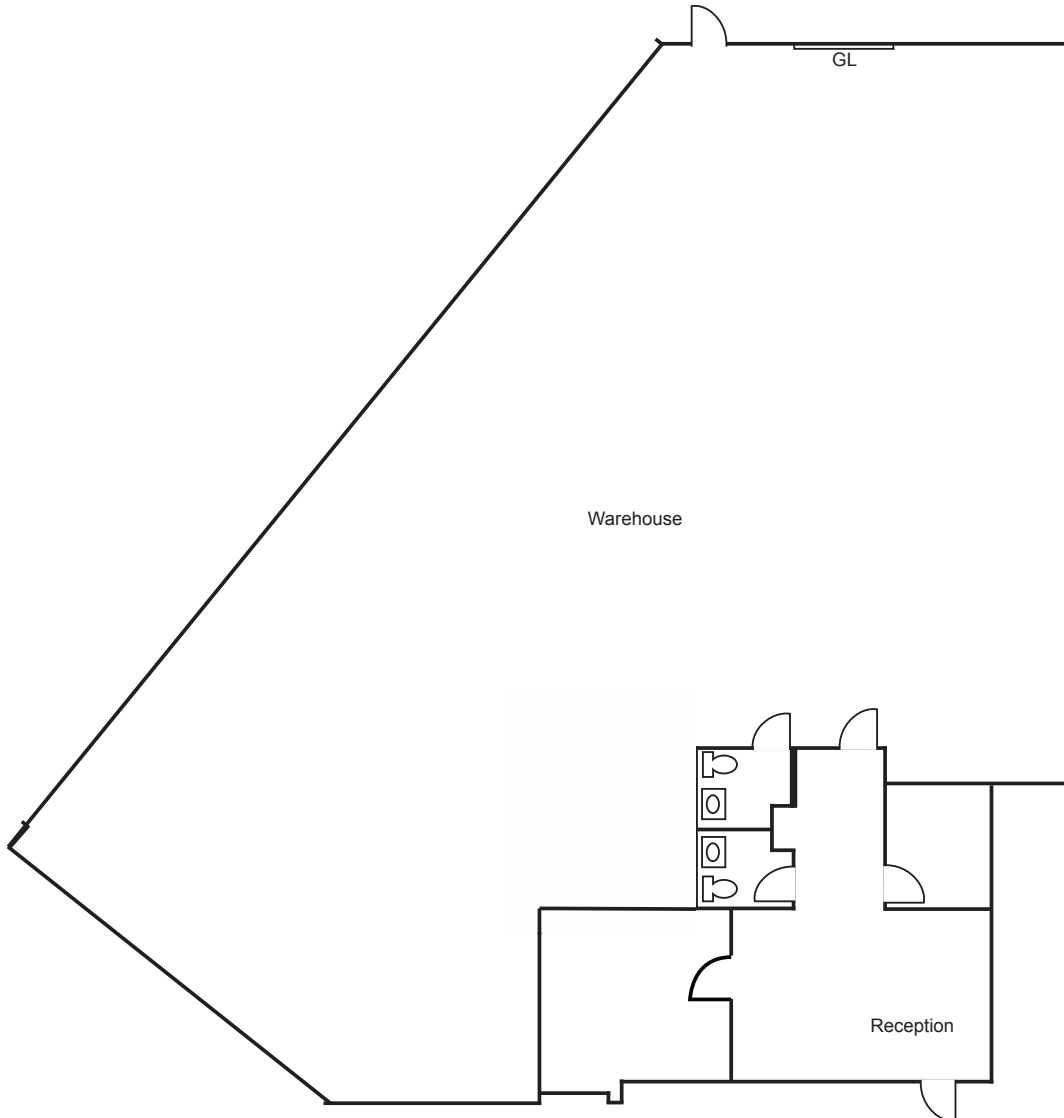
KYLE MCGILLEN
 +1 949 930 9229
 kyle.mcgillen@cushwake.com
 CA Lic. 01959388

MORGAN CHIATE
 +1 949 930 9246
 morgan.chiate@cushwake.com
 CA Lic. 02055492



15791-15801 ROCKFIELD & 2-10 MCLAREN IRVINE, CA

15795 ROCKFIELD - SUITE G | 5,626 SF



FOR MORE INFORMATION, PLEASE CONTACT:

KYLE MCGILLEN

+1 949 930 9229

kyle.mcgillen@cushwake.com

CA Lic. 01959388

MORGAN CHIATE

+1 949 930 9246

morgan.chiate@cushwake.com

CA Lic. 02055492

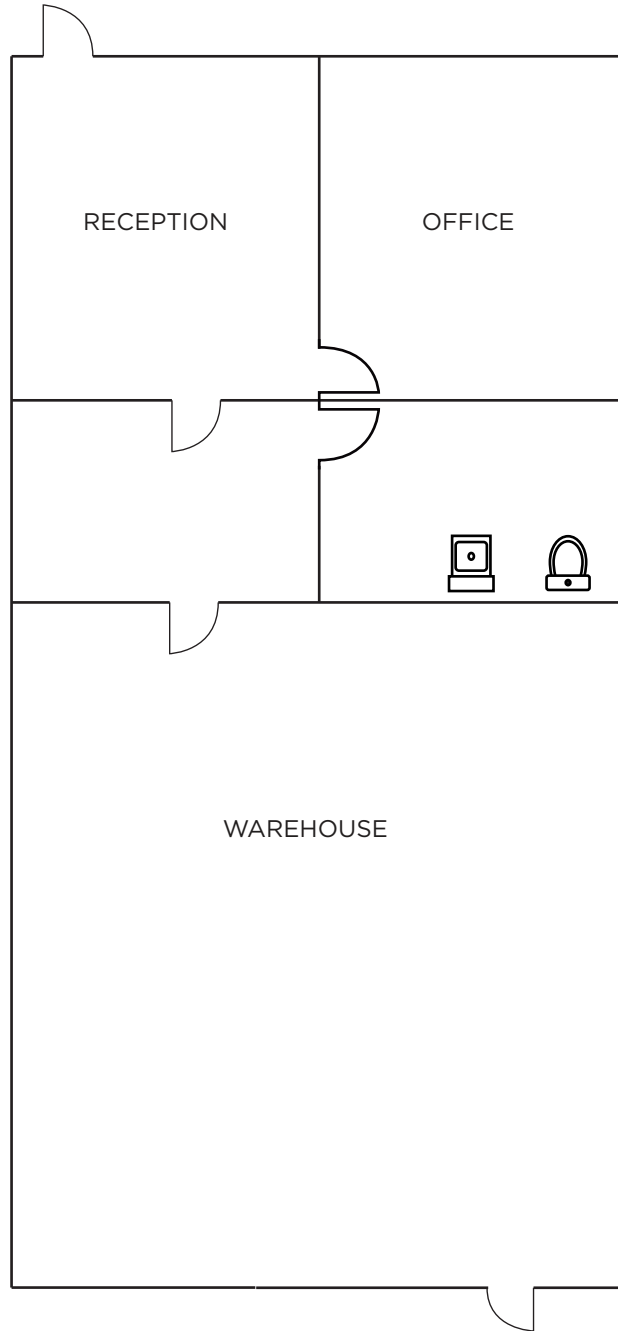
GLP 

 **CUSHMAN & WAKEFIELD**

©2018 Cushman & wakefield. All rights reserved. The information contained in this communication is confidential, may be privileged and is intended for the exclusive use of the above named addressee(s). If you are not the intended recipient(s), you are expressly prohibited from copying, distributing, disseminating, or in any other way using any information contained within this communication. This information has been obtained from sources believed to be reliable but has not been verified. No warranty or representation, express or implied, is made as to the condition of the property (or properties) referenced herein or as to the accuracy or completeness of the information contained herein, and same is submitted subject to errors, omissions, change of price, rental or other conditions, withdrawal without notice, and to any special listing conditions imposed by the property owner(s). Any projections, opinions or estimates are subject to uncertainty and do not signify current or future property performance. This e-mail may be considered advertising under federal law.

15791-15801 ROCKFIELD & 2-10 MCLAREN IRVINE, CA

15801 ROCKFIELD - SUITE N | 1,620 SF



FOR MORE INFORMATION, PLEASE CONTACT:

KYLE MCGILLEN

+1 949 930 9229

kyle.mcgillen@cushwake.com

CA Lic. 01959388

MORGAN CHIATE

+1 949 930 9246

morgan.chiate@cushwake.com

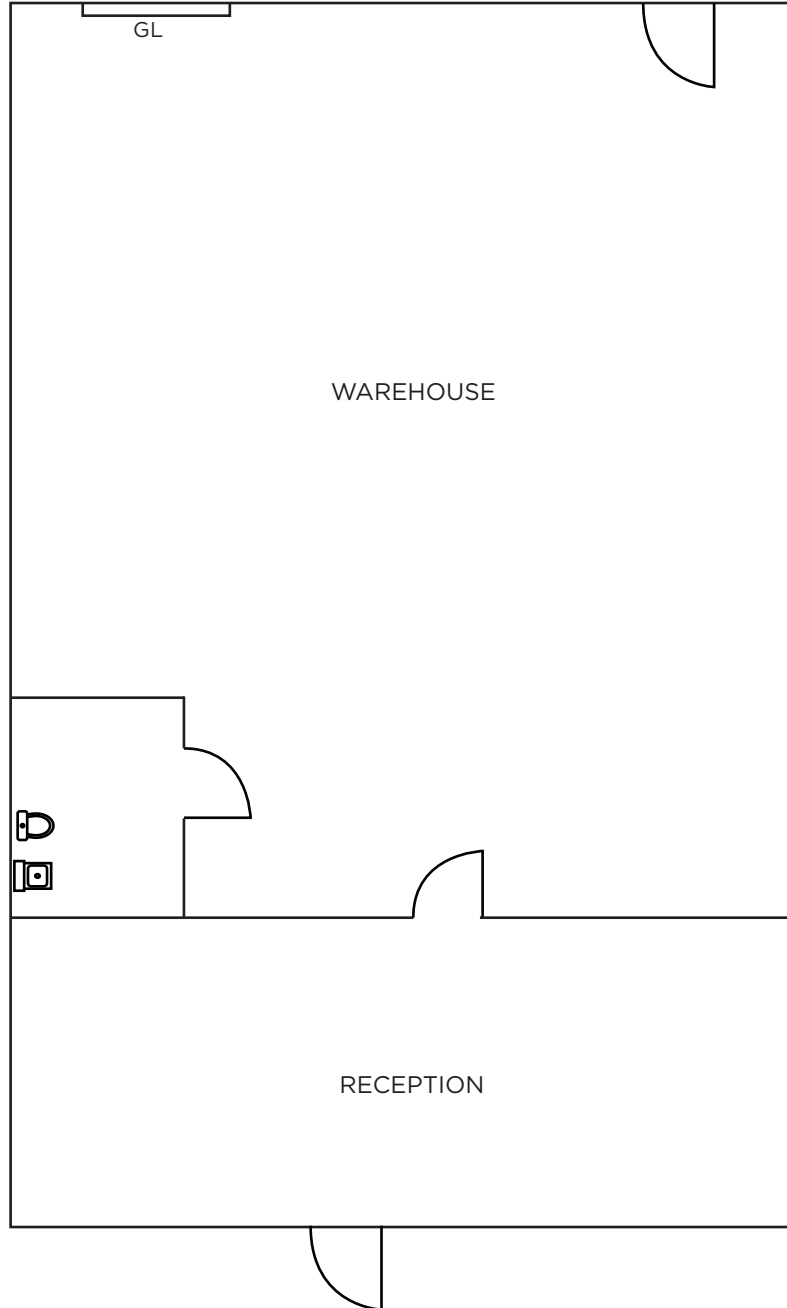
CA Lic. 02055492

GLP 

 **CUSHMAN & WAKEFIELD**

15791-15801 ROCKFIELD & 2-10 MCLAREN IRVINE, CA

4 MCLAREN - SUITE D | 1,460 SF



FOR MORE INFORMATION, PLEASE CONTACT:

KYLE MCGILLEN

+1 949 930 9229

kyle.mcgillen@cushwake.com

CA Lic. 01959388

MORGAN CHIATE

+1 949 930 9246

morgan.chiate@cushwake.com

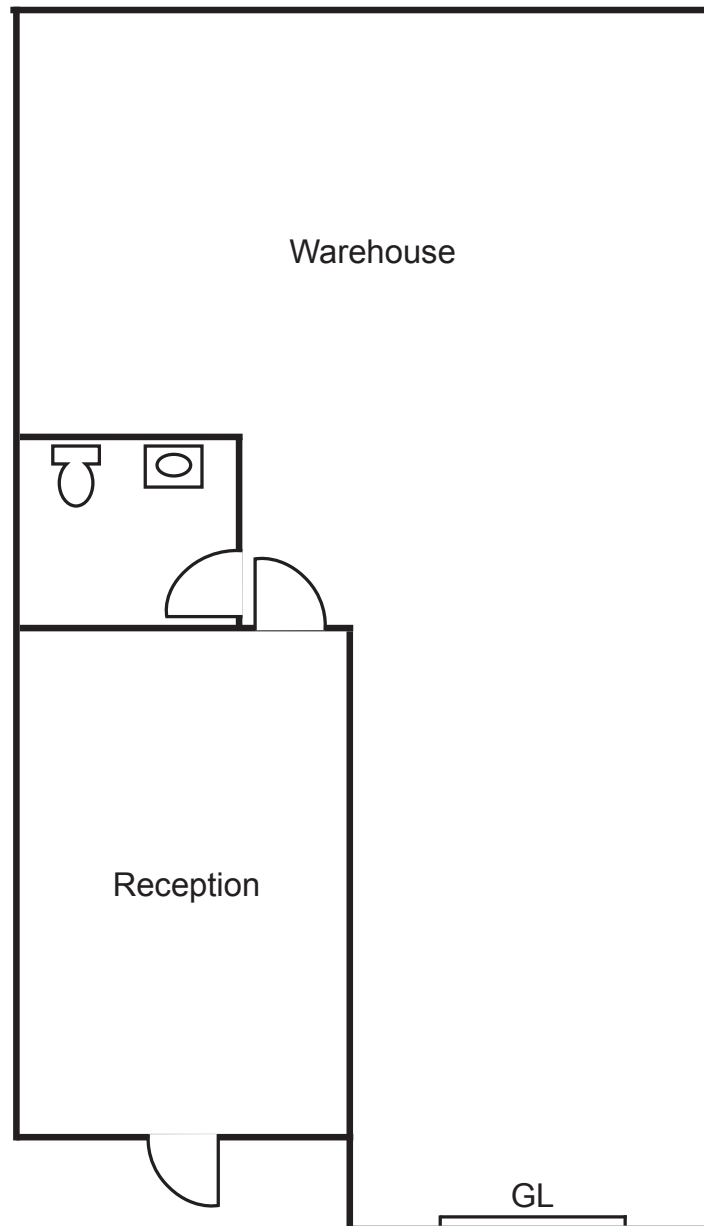
CA Lic. 02055492

GLP 

 **CUSHMAN & WAKEFIELD**

15791-15801 ROCKFIELD & 2-10 MCLAREN IRVINE, CA

6 MCLAREN - SUITE A | 1,200 SF



FOR MORE INFORMATION, PLEASE CONTACT:

KYLE MCGILLEN

+1 949 930 9229

kyle.mcgillen@cushwake.com

CA Lic. 01959388

MORGAN CHIATE

+1 949 930 9246

morgan.chiate@cushwake.com

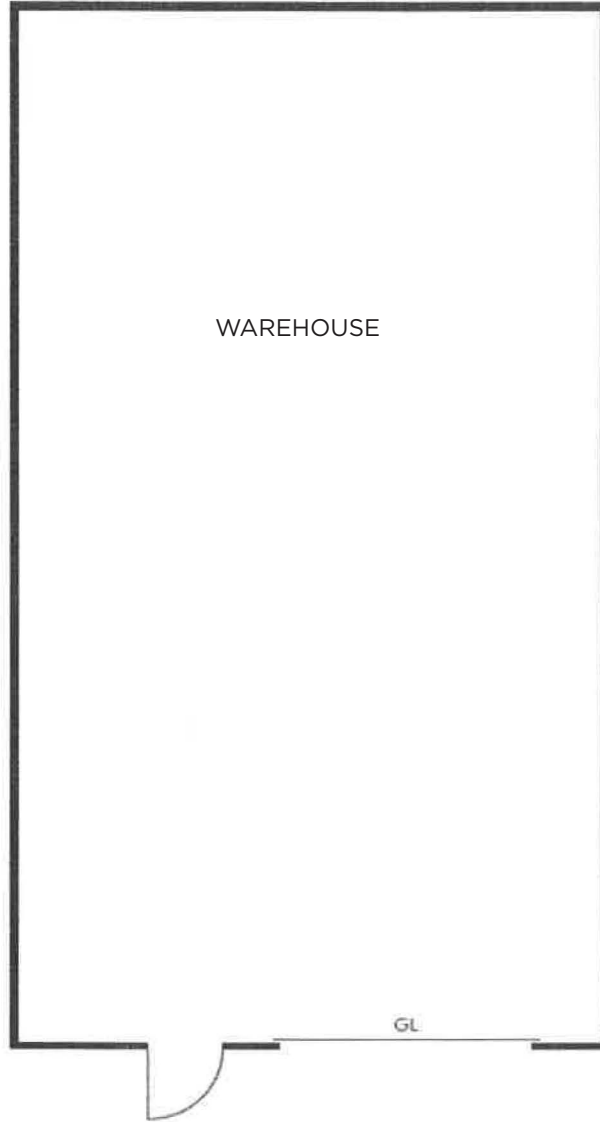
CA Lic. 02055492

GLP

**CUSHMAN &
WAKEFIELD**

15791-15801 ROCKFIELD & 2-10 MCLAREN IRVINE, CA

10 MCLAREN - SUITE A-1 | 1,054 SF



FOR MORE INFORMATION, PLEASE CONTACT:

KYLE MCGILLEN

+1 949 930 9229

kyle.mcgillen@cushwake.com

CA Lic. 01959388

MORGAN CHIATE

+1 949 930 9246

morgan.chiate@cushwake.com

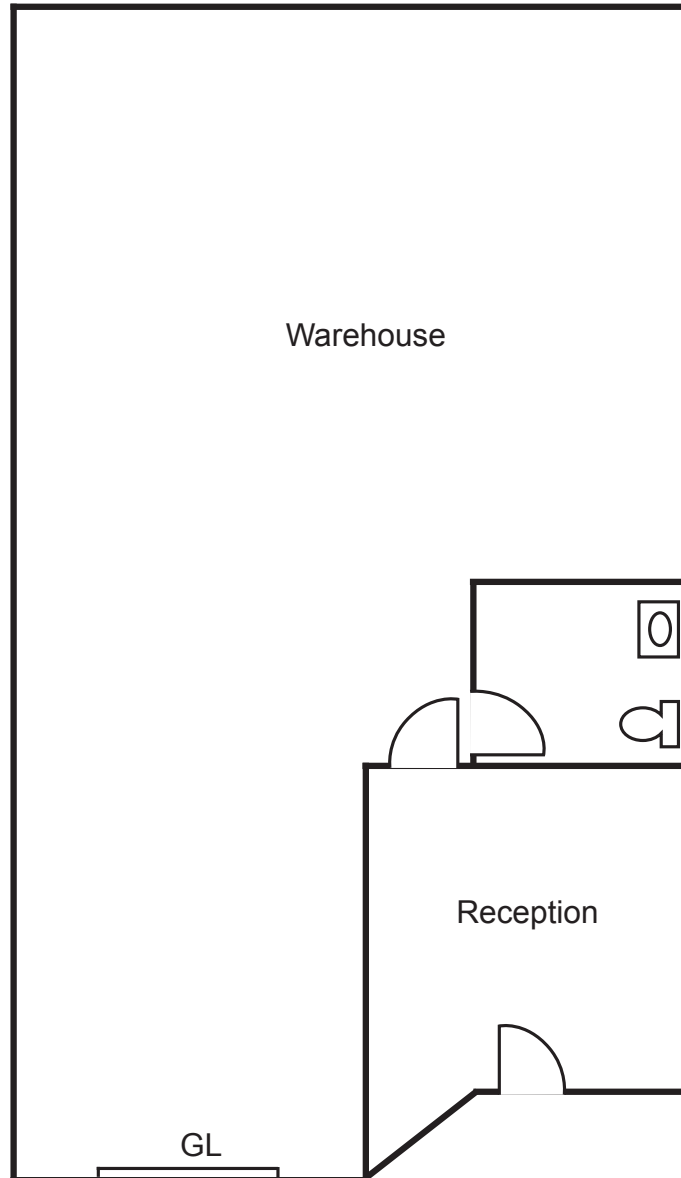
CA Lic. 02055492

GLP 

 **CUSHMAN & WAKEFIELD**

15791-15801 ROCKFIELD & 2-10 MCLAREN IRVINE, CA

8 MCLAREN - SUITE E | 972 SF



FOR MORE INFORMATION, PLEASE CONTACT:

KYLE MCGILLEN

+1 949 930 9229

kyle.mcgillen@cushwake.com

CA Lic. 01959388

MORGAN CHIATE

+1 949 930 9246

morgan.chiate@cushwake.com

CA Lic. 02055492

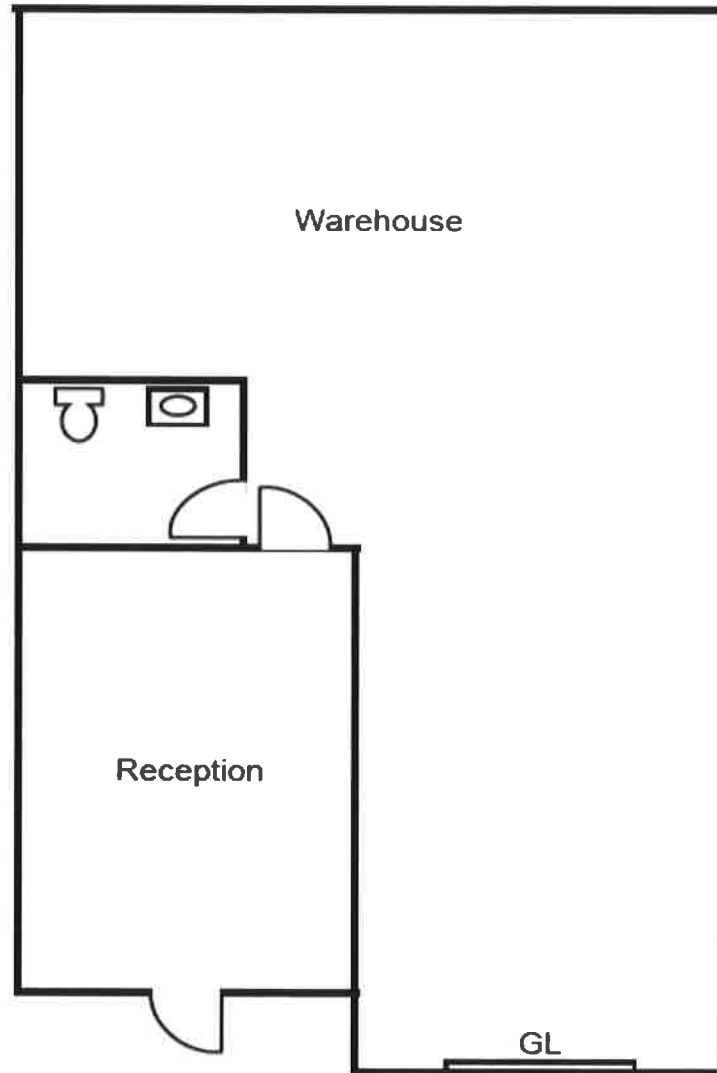
GLP 

 **CUSHMAN & WAKEFIELD**

©2018 Cushman & wakefield. All rights reserved. The information contained in this communication is confidential, may be privileged and is intended for the exclusive use of the above named addressee(s). If you are not the intended recipient(s), you are expressly prohibited from copying, distributing, disseminating, or in any other way using any information contained within this communication. This information has been obtained from sources believed to be reliable but has not been verified. No warranty or representation, express or implied, is made as to the condition of the property (or properties) referenced herein or as to the accuracy or completeness of the information contained herein, and same is submitted subject to errors, omissions, change of price, rental or other conditions, withdrawal without notice, and to any special listing conditions imposed by the property owner(s). Any projections, opinions or estimates are subject to uncertainty and do not signify current or future property performance. This e-mail may be considered advertising under federal law.

15791-15801 ROCKFIELD & 2-10 MCLAREN IRVINE, CA

8 MCLAREN - SUITE J | 972 SF



FOR MORE INFORMATION, PLEASE CONTACT:

KYLE MCGILLEN

+1 949 930 9229

kyle.mcgillen@cushwake.com

CA Lic. 01959388

MORGAN CHIATE

+1 949 930 9246

morgan.chiate@cushwake.com

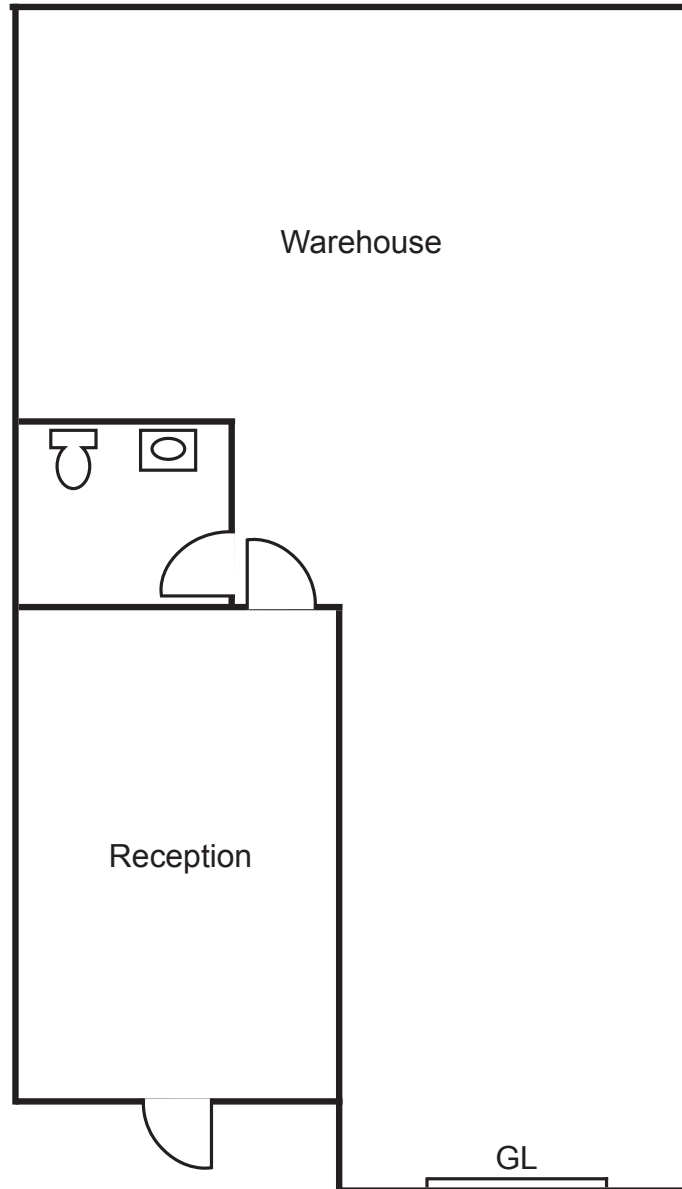
CA Lic. 02055492

GLP 

 **CUSHMAN & WAKEFIELD**

15791-15801 ROCKFIELD & 2-10 MCLAREN IRVINE, CA

8 MCLAREN - SUITE M | 972 SF



FOR MORE INFORMATION, PLEASE CONTACT:

KYLE MCGILLEN

+1 949 930 9229

kyle.mcgillen@cushwake.com

CA Lic. 01959388

MORGAN CHIATE

+1 949 930 9246

morgan.chiate@cushwake.com

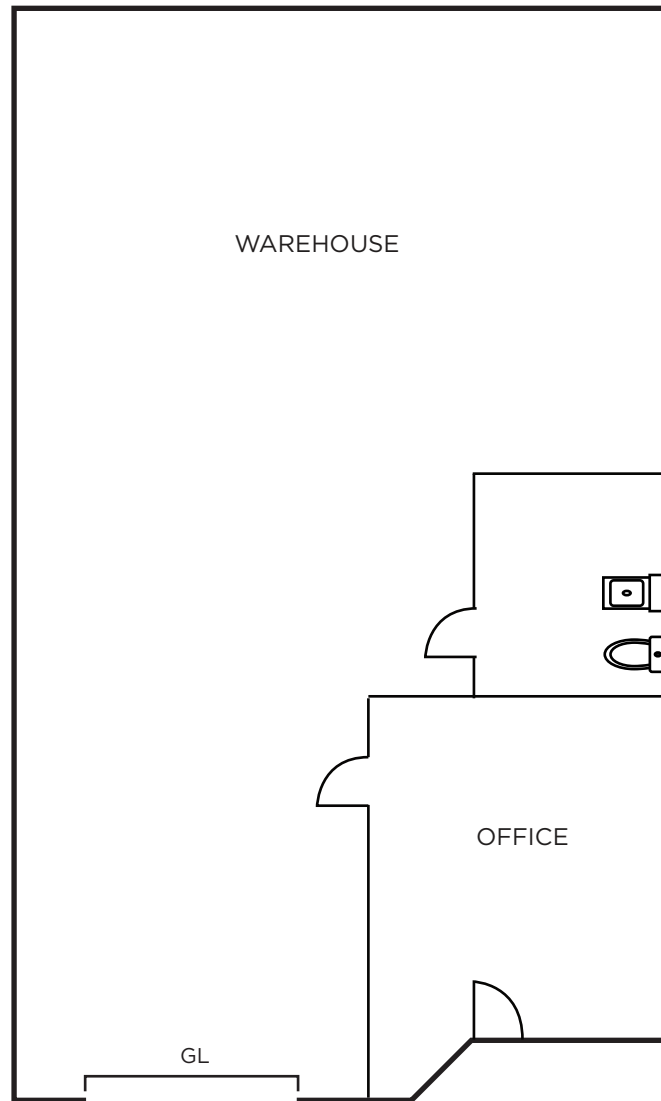
CA Lic. 02055492

GLP 

 **CUSHMAN & WAKEFIELD**

15791-15801 ROCKFIELD & 2-10 MCLAREN IRVINE, CA

8 MCLAREN - SUITE Q | 972 SF



FOR MORE INFORMATION, PLEASE CONTACT:

KYLE MCGILLEN

+1 949 930 9229

kyle.mcgillen@cushwake.com

CA Lic. 01959388

MORGAN CHIATE

+1 949 930 9246

morgan.chiate@cushwake.com

CA Lic. 02055492

GLP 

 **CUSHMAN & WAKEFIELD**

©2018 Cushman & Wakefield. All rights reserved. The information contained in this communication is confidential, may be privileged and is intended for the exclusive use of the above named addressee(s). If you are not the intended recipient(s), you are expressly prohibited from copying, distributing, disseminating, or in any other way using any information contained within this communication. This information has been obtained from sources believed to be reliable but has not been verified. No warranty or representation, express or implied, is made as to the condition of the property (or properties) referenced herein or as to the accuracy or completeness of the information contained herein, and same is submitted subject to errors, omissions, change of price, rental or other conditions, withdrawal without notice, and to any special listing conditions imposed by the property owner(s). Any projections, opinions or estimates are subject to uncertainty and do not signify current or future property performance. This e-mail may be considered advertising under federal law.