



Hwy 401 Business & Burlington Mills Rd.,
Rolesville, NC 27571

+/-12 Acres
Land for Sale

LOCATION: Corner of Burlington Mills Road and Main Street in Rolesville, NC. Just east of Rolesville Middle School.

FRONTAGE: More than 500 feet of frontage on Main Street and Burlington Mills Road.

ACREAGE: +/-12 acres, two parcels

ZONED: Industrial - land use calls for commercial, retail. Ideal for shops, grocery, restaurants or office.

TOPO: Level

UTILITIES: Water and sewer on site

PRICE: \$1,668,000.00 or \$139,000.00 per acre



Bill White, Broker

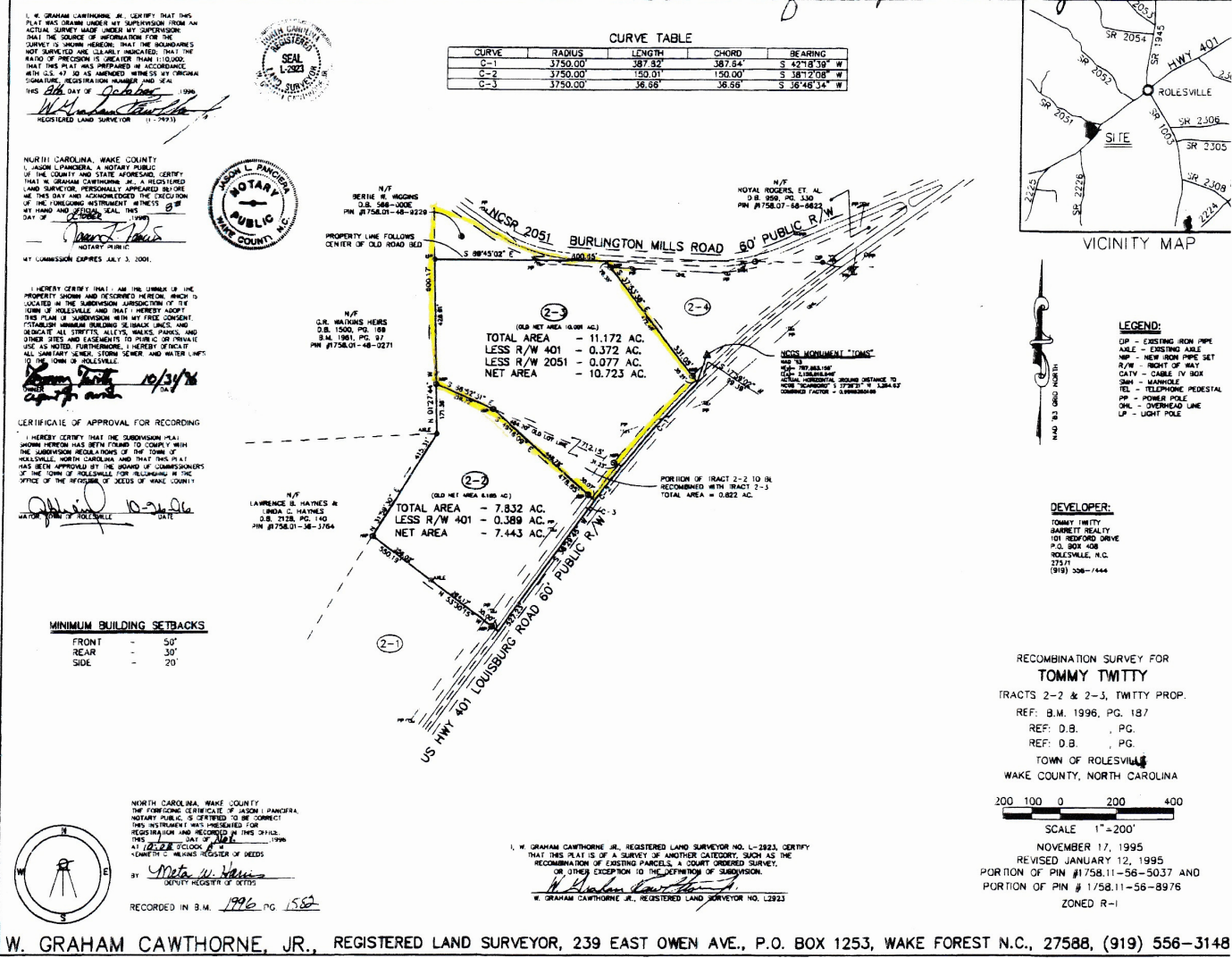
(919) 621-9622

bwhite@whiteoakcommercial.com

Hwy 401 Business & Burlington Mills Rd., Rolesville, NC 27571

+/-12 Acres Land for Sale

Book of Maps 1996 Pg 1582



W. GRAHAM CAWTHORNE, JR., REGISTERED LAND SURVEYOR, 239 EAST OWEN AVE., P.O. BOX 1253, WAKE FOREST N.C., 27588, (919) 556-3148



403 E. Six Forks Road, Raleigh, NC 27609
919-832-6800 (phone) 919-832-8043 (fax)
whiteoakcommercial.com

The information contained herein was obtained from sources believed reliable; however, White Oak Commercial, Inc. makes no guarantees, warranties, or representations as to the completeness or accuracy thereof. The presentation of this property is submitted subject to errors, omissions, changes of price or conditions prior to sale or lease, or withdrawal without notice.