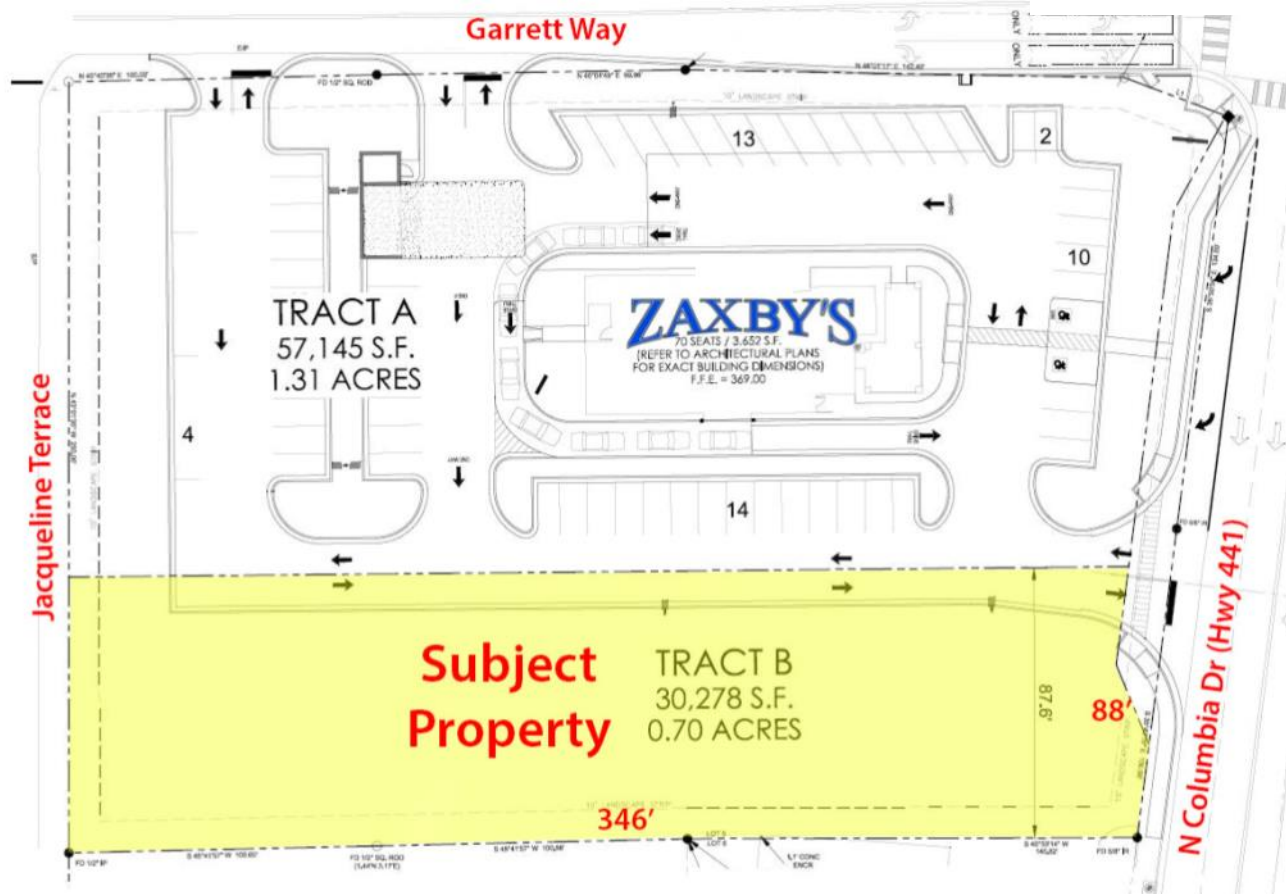


Commercial Lot For Sale  
 1690 Highway 441 N  
 Milledgeville, GA 31061



**Lot Size:** .70 acres  
**Zoning:** Community commercial  
**Utilities:** All Available  
**Traffic:** 24,000 vehicles per day  
**Depth:** 346'  
**Frontage:** 88'

2017 Demographics	1 Mile	3 Mile	5 Mile
Population	3,235	20,060	30,640
Median Age	37.4	27.6	32.1
Avg. HH Income	\$49,580	\$51,140	\$50,394

**Notes:** This site is located adjacent to Zaxby's. This site has access to Highway 441 (N. Columbia) as well as Garrett Way. It has cross parking with Zaxby's. This site is 2nd parcel south of Garrett on the "Breakfast side" of the highway. Ideal for another restaurant, office, or retail.

**Sale Price: \$499,000**

**FOR MORE  
 INFORMATION  
 CONTACT**

**Trip Wilhoit, CCIM, ALC**  
 478-746-9421 (O)  
 478-960-4080 (C)  
[trip@fickling.com](mailto:trip@fickling.com)

**Patty Burns, CCIM, ALC**  
 478-746-9421 (O)  
 478-951-5100 (C)  
[patty@fickling.com](mailto:patty@fickling.com)

[georgiacommercialrealestate.net](http://georgiacommercialrealestate.net) | [commercial.fickling.com](http://commercial.fickling.com)

577 Mulberry St, Suite 1100 \* P.O. Box 310 \* Macon, GA 31202 | Phone (478) 746-9421 | Fax (478) 742-2015  
 This information is from resources deemed to be reliable, no warranties or guarantees for accuracy are made by Fickling and Company

Commercial Lot For Sale  
1690 Highway 441 N  
Milledgeville, GA 31061

# AERIAL



**FOR MORE  
INFORMATION  
CONTACT**

**Trip Wilhoit, CCIM, ALC**  
478-746-9421 (O)  
478-960-4080 (C)  
[trip@fickling.com](mailto:trip@fickling.com)

**Patty Burns, CCIM, ALC**  
478-746-9421 (O)  
478-951-5100 (C)  
[patty@fickling.com](mailto:patty@fickling.com)

[georgiacommercialrealestate.net](http://georgiacommercialrealestate.net) | [commercial.fickling.com](http://commercial.fickling.com)

577 Mulberry St, Suite 1100 \* P.O. Box 310 \* Macon, GA 31202 | Phone (478) 746-9421 | Fax (478) 742-2015  
This information is from resources deemed to be reliable, no warranties or guarantees for accuracy are made by Fickling and Company